

U L T I M U M



THE MOST PRESTIGIOUS COLLECTION FOR A STUNNING ENTRANCE



WWW.PIRNAR.CO.UK



PIRNAR'S **HERITAGE**

We take pride in our heritage. From our initial steps in the family workshop onward, we are driven by a passion for creation and a commitment to excellence in design and craftsmanship that has been passed down through generations. We continuously enhance our expertise and combine it with modern technologies. Strong roots maintain our connection to tradition, while courage and boldness push the boundaries of possibility, guiding us to new successes. With a clear vision and an innovative approach, we exceed expectations and set new milestones globally in the realm of building furnishings.





ULTIMUM

THE PEAK OF INNOVATION, COMBINING CUTTING-EDGE TECHNOLOGY, PRESTIGIOUS HANDCRAFTED DETAILS, AWARD-WINNING DESIGN, AND UNMATCHED FUNCTIONALITY FOR AN EXCEPTIONAL ENTRY EXPERIENCE.

Ultimum is a masterfully crafted collection of entrance doors for the most contemporary homes. This most awarded line in a unique and personalized way subtly accentuate the architectural design of the modern home. Ultimum models inherently feature the best equipment, the latest upgrades, and state-of-the-art door control system, thus fulfilling the most demanding aesthetic and technological ideals of homeowners.



ULTIMUM **PURE**



Ultimum Pure embodies the essence of minimalism. With its pure lines and perfect alignment with the facade, Pure entrances significantly shape the architecture of the most contemporary homes. The elegantly refined design subtly suggests uncompromising alignment of all elements of the entrance door without excessive edges and frames. What remains is a smooth surface, emphasized by decorative tempered glass or finely processed aluminium, exuding pure elegance.





ULTIMUM **MULTILEVEL**



Ultimum Multilevel celebrates boldness and honours individuality. The aluminium entrances consist of multiple levels of surfaces that visually appear three-dimensional. The sand dune-like shape creates beautiful patterns that dynamically accentuate the appearance of the most contemporary homes. The collection is distinguished by the artisan skills of Pirnar's craftsmen and exceptional attention to detail, often handcrafted through polishing and shaping.





STANDARD

DOORS THAT SEAL LIKE A WALL

THE UNIQUE CARBON DOOR CONSTRUCTION CARBONCORE

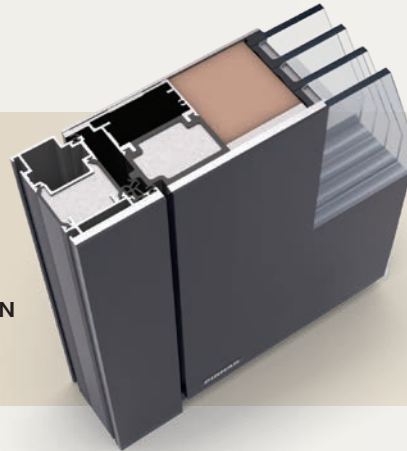
The heart of every premium entrance door is its construction. CarbonCore is a unique patented carbon construction made exclusively for entrance doors. Carbon fibres are exceptionally lightweight, rigid, and several times stronger than steel. With CarbonCore profiles, we significantly minimize door warping, whether in scorching sun or the coldest winters. This construction enables the development of innovative design and functional solutions for Pirnar's entrance doors.



ULTIMUM **PURE** LEVEL

ULTIMUM **MULTILEVEL** CONTOUR

- ✓ RECORD-SEALING
- ✓ SUPERIOR THERMAL AND ACOUSTIC INSULATION
- ✓ EXCEPTIONAL STABILITY WITHOUT WARPING
- ✓ THE STRONGEST YET LIGHTWEIGHT CONSTRUCTION
- ✓ PRODUCT DURABILITY



Thermal transmittance	0,75 W/(m²K)	0,75 W/(m²K)
Door frame thickness	88 mm	120 mm
Door leaf thickness	88 mm	88/120 mm
Thermal glazing	4-layer glazing	Triple / 4-layer glazing



1. EXCEPTIONAL SIZES

CarbonCore allows Pinar's entrance doors to embellish majestic villas, castles, and masterpieces of contemporary architecture. With an impressive height and width Ultimium models together with side elements, create an impression of stunning grandeur.

2. CONCEALED HINGES

Concealed hinges are an important aesthetic and security element on Ultimium entrance doors with CarbonCore construction. The elegant black finish and alignment with the door leaf complement exceptional robustness and durability, allowing concealed hinges to also serve as a security bolt.

3. SEALING MAGNET WEATHERSEAL

CarbonCore features advanced sealing with Magnet WeatherSeal, giving the doors an outstanding water-tightness rating of 9A in testing laboratories. This ensures complete water-tightness, even under pressure from winds at speeds of up to 114 km/h (600 Pa). This represents a sixfold higher load than what regular entrance doors can withstand.



Water-tightness class

9A



Water-tightness at wind speed

114 km/h | 600 Pa



Air-tightness class

4

A photograph of a modern building entrance at night. The entrance features a large glass door and a stone wall. The interior is lit up, and the exterior is illuminated by warm lights. The overall atmosphere is sophisticated and secure.

STANDARD

LIVE SMARTER AND SAFER

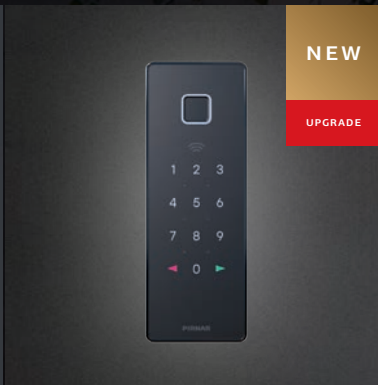
COMPLETE SAFETY AND COMFORT

Pirnar offers state-of-the-art solutions and the finest products for complete security and comfort. You can unlock the entrance doors using the smart SecuroSmart system or the SecuroSmart Keypad in the Pirnar mobile app, as well as with a fingerprint reader. Combined with the premium locking system Armo Comfort Electro Plus, you will ensure that your home is a fortress of safety and peace.



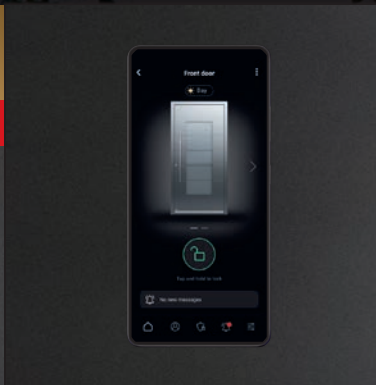
FINGERPRINT READER

This modern and popular method of unlocking doors with a fingerprint reader ensures enhanced security and, above all, a simpler and more comfortable entry for your entire family, as it allows you to store fingerprints of multiple selected individuals simultaneously. Forget about keys and concerns.



SECUROSMART KEYPAD

The modern keypad allows for unlocking with various PIN codes tailored to specific needs and unlocking with an RFID card. It features a fingerprint reader and doorbell, managed via the Pirnar mobile app.



SMART MANAGEMENT SECUROSMART

The smart SecuroSmart system in the Pirnar mobile app boasts outstanding functionalities for easy and secure door usage. Even if you are on the other side of the world, you can conveniently unlock your doors.



CONCEALED HINGES

Concealed hinges are a vital security element of Pirnar's entrance doors, characterized by exceptional robustness and long-term durability. They not only provide an elegant appearance but also function as a security bolt that effectively prevents the lifting of the door or its forcible removal from the frame.



ARMO COMFORT ELECTRO LOCK AND ARMO COMFORT ELECTRO PLUS

The premium multi-point lock allows for motorized unlocking without a key and automatic mechanical locking. It is compatible with remote unlocking systems and fingerprint reader. The door with this lock achieves burglar resistance RC2 according to EN 1627 for RC. The Armo Comfort Electro Plus lock offers a fully motorized solution for secure, comfortable, and modern use of entrance doors. It operates without manual locking and allows controlled access with advanced safety features.



* The RC2 package is standardly available for inward opening single-leaf door configurations with a solid door leaf, sizes up to 1250 x 2400 mm, without toplights or sidelights. For designs with glass in the door leaf featuring sidelights, toplights, or separate sidelights, the RC2 package is available as an additional option.

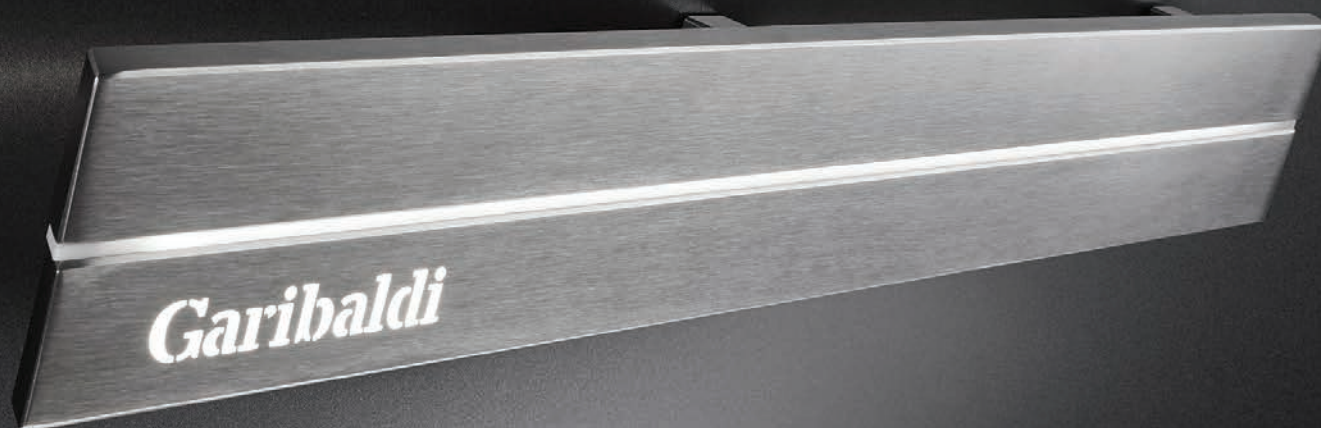
SMART
LUX

STANDARD
AT PIRNAR

UNIQUE ON THE MARKET

CREATING AMBIANCE WITH **ELEGANT LIGHTING**

Pirnar's solutions for creating a comfortable atmosphere facilitate the management of lighting for entrance doors at thresholds, pull handles, or lever handles. With the smart SmartLux system in the Pirnar mobile app, you can adjust the intensity, colour, temperature, and timing of the lighting. Manual control of the light remains an option, allowing you to modify the intensity, colour, and temperature of the illumination.



SMARTLUX LIGHTING PACKAGE*

The lighting package, exclusively included in the standard price, is available on pull handles, lever handles, floor illumination, the illuminated dedication plate, and the enclosure of the fingerprint reader, allowing you to create a refined ambiance at your doors.

OUTSIDE



INSIDE



Time setting for LED lighting



Wi-Fi and Bluetooth connectivity



Remote management



Voice control with integration of Google Assistant and Amazon Alexa



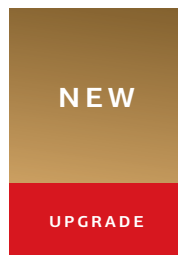
Temperature control of light from 2700 Kelvin (warm white) to 6500 Kelvin (cool white)



The SmartLux system is compatible with many popular smart home solutions.

* The lighting for the entrance doors is exclusively available as part of a package; individual lighting elements cannot be ordered separately. If you choose not to use specific lighting, you can easily turn it off using the Pirnar mobile app.





LUXURIOUS PVD COATINGS

MAKE IT **PERSONAL.** MAKE IT **YOURS.**

Inspired by the beauty of luxurious jewellery and watches, you can enhance handles, pull handles, protective trims, or the enclosure of the fingerprint reader with a unique PVD coating. In the opulence of gold, bronze, black, and copper shades, or in stainless steel execution, every detail on your entrance doors becomes a synonym for refined personal style and elegance. Pinar's PVD technology is also characterized by increased resistance to scratches, stains, and wear, longer color durability, and extended product lifespan.



BASIS
**STAINLESS
STEEL**



PVD
**GOLDEN
HONEY**



PVD
**COPPER
DUSK**



PVD
**MYSTIC
BRONZE**



PVD
**VOLCANIC
SHADOW**



WATCH THE VIDEO
ABOUT PVD COATINGS

PVD coating is exclusively available as part of a package; individual components cannot be ordered separately.





ADVANTAGES OF LUXURIOUS PVD COATINGS:

- HIGH RESISTANCE TO SCRATCHES
- LUXURIOUS APPEARANCE
- DURABILITY



NEW

STANDARD*

THE FIRST TOUCH OF HOME

MAGNIFICA

The stunning, internationally awarded interior handle is made of precision-cast stainless steel, ensuring its solidity and robustness. The refined ergonomic shape, inspired by the elegance of Pegasus' wing in flight, offers a light feeling of levity and a comfortable grip.



PVD SURFACE COATING
GOLDEN HONEY



WATCH THE VIDEO
ABOUT MAGNIFICA

UNIQUE
PIRNAR
INNOVATION



1. An exclusive unique mechanism that derives directly from the door ensures superior stability and extended lifespan.

2. The button within the light circle allows for door opening without pressing the handle.

3. The recognizable light circle subtly signals the locking status of the door.

4. The appearance of the handle can be enhanced with various colour shades in PVD coating.

5. Locking the door: the cylindrical button is pulled out and turned counterclockwise.

6. Unlocking the door: the cylindrical button is pulled out and turned clockwise.

* The Magnifica handle is included as standard equipment in the Stainless Steel variation.

STANDARD



Stainless Steel



PVD Surface Coating: Copper Dusk



PVD Surface Coating: Mystic Bronze



PVD Surface Coating: Volcanic Shadow

ULTIMUM

DECORATIVE TEMPERED GLASS

Decorative tempered glass offers greater safety and, in various colours with both shiny and matte finishes creates a refined, minimalist, and glamorous look on modern entrances.

NIGHT SKY GLOSS

Tinted surface without a pattern on glossy smooth clear glass.

NIGHT SKY MAT

Black tinted surface without a pattern on fine-matte glass.

NIGHT STORM GLOSS

Elegant black-and-white striped pattern on glossy smooth clear glass.

NIGHT STORM MAT

Elegant black-and-white striped pattern on fine-matte glass.

AFRICAN MYSTERY GLOSS

Striped pattern in black-copper color on glossy smooth clear glass.

AFRICAN MYSTERY MAT

Striped pattern in black-copper color on fine-matte glass.



LET THE NOISE AND COLD OUT UNMATCHED THERMAL AND ACOUSTIC INSULATION

Exceptionally insulated entrance doors prevent heat loss during the winter, while keeping the interiors pleasantly cool in the summer. At Pinnar, we have developed superior thermal and sound insulation for those who refuse to compromise on comfortable and energy-efficient living. With record-breaking insulation values, you will save on heating costs and ensure an energy-efficient home.





SOUNDCORE

The best solution for homes in urban areas.

SoundCore is premium sound insulation for residential homes in urban environments, featuring a filling density of 900 kg/m³ in the door leaf. In combination with superior sealing, it reduces the sound load in living areas by more than 18 times compared to fully opened doors. The intensity of sound passing through the entrance doors is significantly reduced compared to values found in standard entrance doors.



UPGRADE

SoundCore

Thermal transmittance:	U_d = from 0,85 W/(m ² K)
Sound insulation:	R_w (C; Ctr) = up to 43 (-1; -4) dB
Insulation panel:	SoundCore

THERMOCORE

Extraordinarily low thermal transmittance values, suitable for passive construction.

ThermoCore is premier thermal insulation for residential houses and passive construction with significantly higher thermal insulation properties. Exceptionally thin panels made from glass nano fibres, combined with other insulating materials, contribute to reduced energy consumption and additional savings on heating. Thermal insulation is improved by nearly 20 % compared to standard doors.



UPGRADE

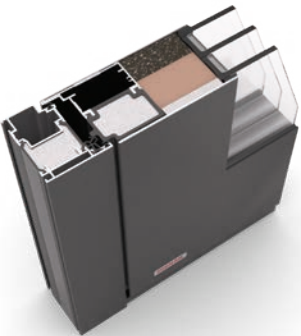
ThermoCore

Thermal transmittance:	U_d = from 0,60 W/(m ² K)
Insulation panel:	ThermoCore

SUPREMECORE

The only solution on the market that provides outstanding thermal and sound insulation simultaneously.

SupremeCore is premium insulation for residential houses that boasts record values for sound insulation and thermal transmittance. Innovative insulation panels for sound and heat, together with other materials, create solid doors with exceptional soundproofing and the lowest possible thermal losses. With excellent sound insulation, you will not sacrifice thermal transmittance.



SUPERIOR
UPGRADE

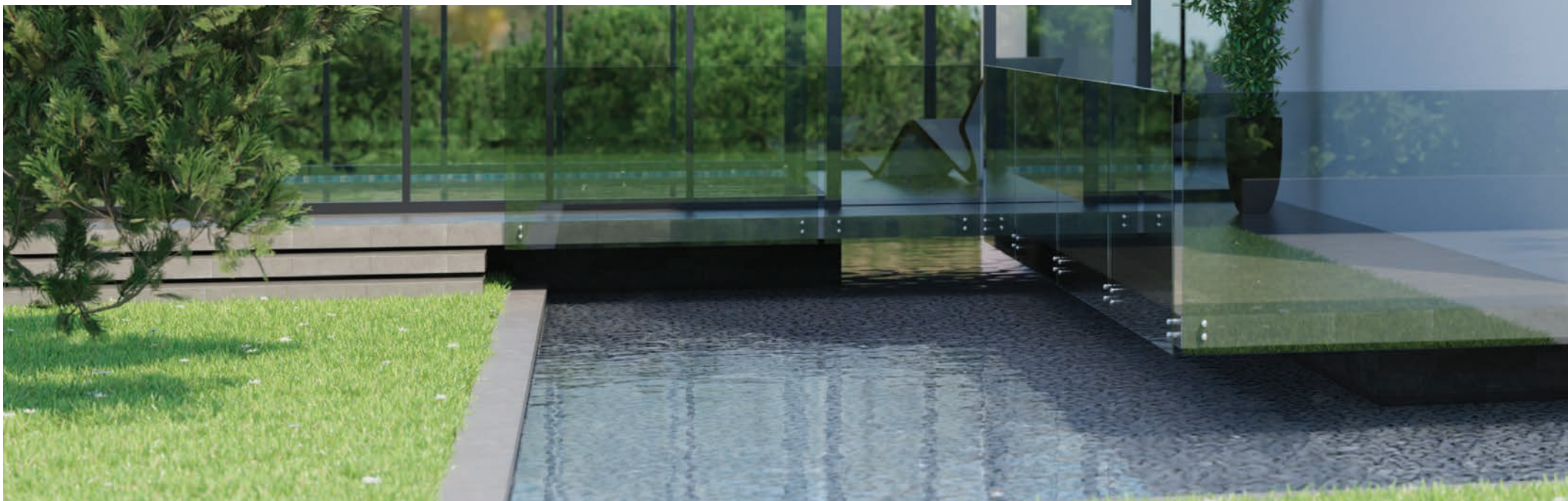
SupremeCore

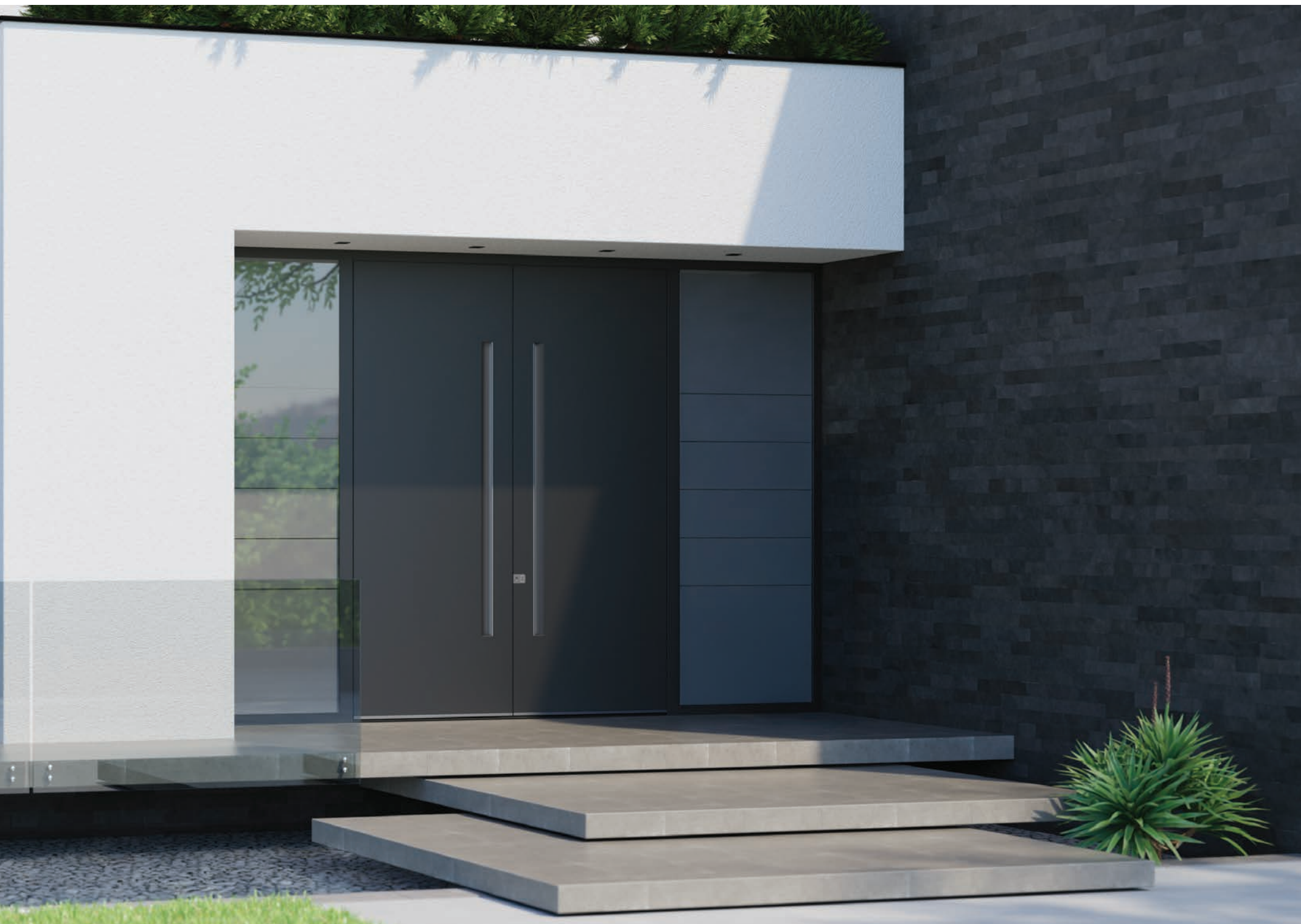
Thermal transmittance:	U_d = from 0,63 W/(m ² K)
Sound insulation:	R_w (C; Ctr) = up to 42 (-2; -5) dB
Insulation panel:	SoundCore + ThermoCore

R_w = sound insulation / C = correction factor for mid-frequency ranges / Ctr = correction factor for low-frequency ranges



ULTIMUM **PURE** MODELS







635 GLASS

Decorative tempered glass DARK GREY with black motif outside / PVD VOLCANIC SHADOW / Parsol Grey glass inside / OneTouch handle 9623 with SMARTLUX illumination / SECUROSMART finger scanner with ARMO COMFORT ELECTRO lock / Protective trim 1500 glossy / Ambient floor lighting SMARTLUX



GERMAN
DESIGN
AWARD
WINNER
2017

635 ALU

Colour FS QUARZ 2 / PVD VOLCANIC SHADOW /
Glass motif sandblasted / OneTouch handle 9623
with SMARTLUX illumination / SECUROSMART finger
scanner with ARMO COMFORT ELECTRO lock /
Protective trim 1500 glossy / Ambient floor lighting
SMARTLUX



SMART
LUX

PVD

OneTouch

A GLOBAL INNOVATION

AUTOMATIC DOOR OPENING MECHANISM

ELEGANT ALIGNMENT WITH THE DOOR LEAF

PVD



626 ALU

Colour 90146 / PVD COPPER DUSK / Glass motif sandblasted / Handle GRIP 9602 with SMARTLUX illumination / Scratch protection PRIVILEGELUX prepared for finger scanner / SECUROSMART finger scanner with ARMO COMFORT ELECTRO lock / Protective trim 1500 glossy / Ambient floor lighting SMARTLUX



626 A ALU

*Colour 90146 / PVD COPPER DUSK / Handle
GRIP 9602 with SMARTLUX illumination /
Scratch protection PRIVILEGE SMARTLUX
prepared for finger scanner / SECUROSMART
finger scanner with ARMO COMFORT
ELECTRO lock / Protective trim 1500 glossy /
Ambient floor lighting SMARTLUX*



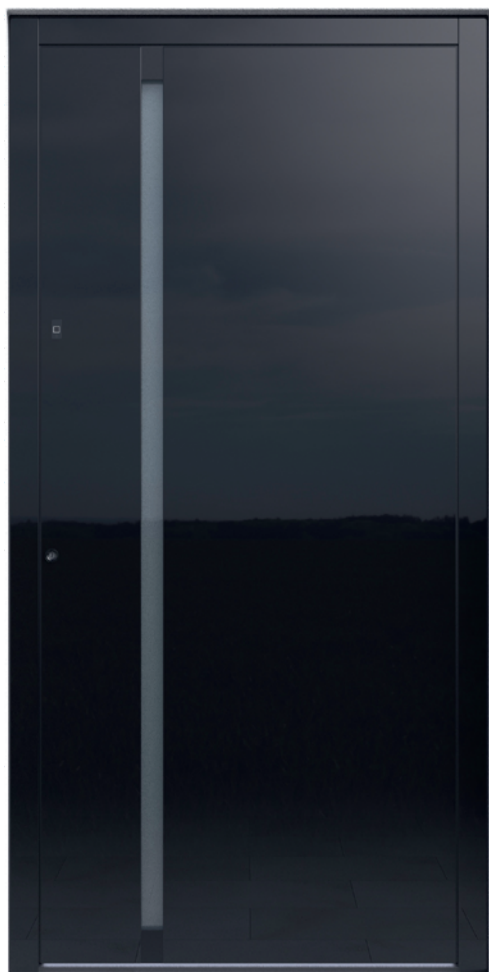
624 A ALU

Colour FS 9016 / PVD VOLCANIC SHADOW / Handle GRIP 9610 with SMARTLUX illumination / Scratch protection PRIVILEGELUX prepared for finger scanner / SECUROSMART finger scanner with ARMO COMFORT ELECTRO lock / Ambient floor lighting SMARTLUX



624 ALU

Colour DB 703 (80077) / Handle GRIP 9610 / Satinato glass / Scratch protection PRIVILEGELUX prepared for finger scanner / SECUROSMART finger scanner with ARMO COMFORT ELECTRO lock / Ambient floor lighting SMARTLUX

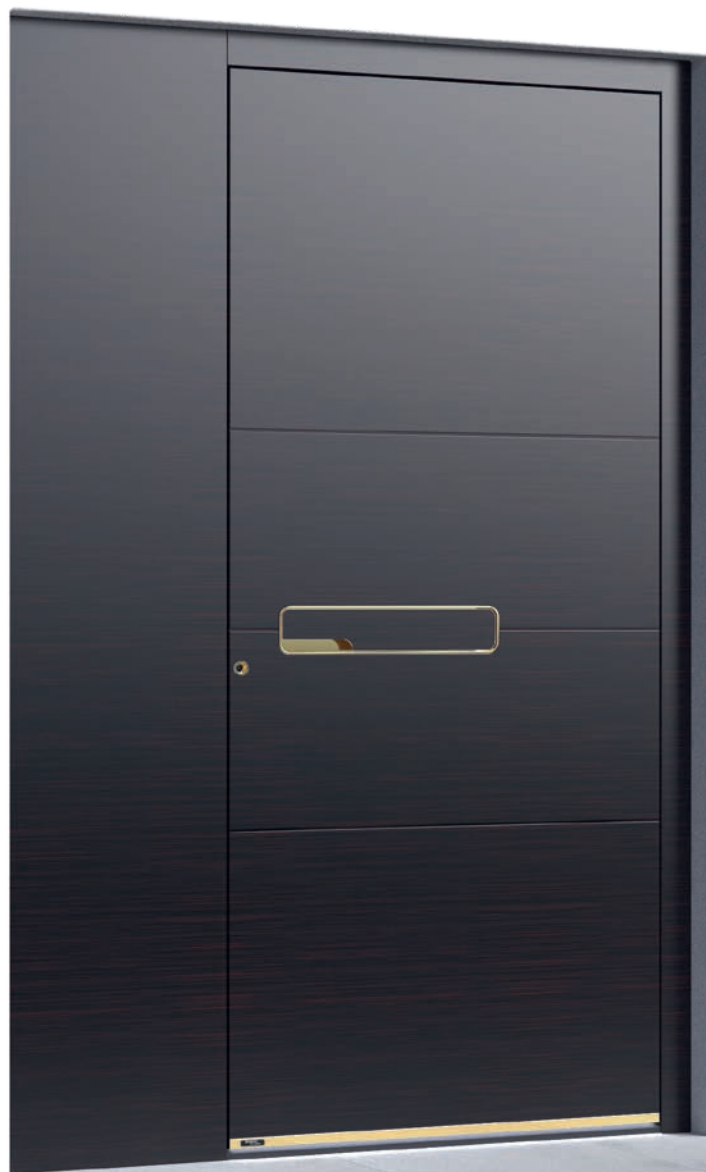


624 GLASS

Decorative tempered glass DARK GREY outside / Handle GRIP 9620 / Satinato glass / SECUROSMART finger scanner and ARMO COMFORT ELECTRO lock / Ambient floor lighting SMARTLUX



PVD

**612 A GLASS**

*Decorative tempered glass with grooves AFRICAN MYSTERY
MATTE outside / PVD GOLDEN HONEY / Special handle LUXOR
SPECTRA with SMARTLUX illumination / SECUROSMART finger
scanner with ARMO COMFORT ELECTRO lock / Protective trim
1500 / Ambient floor lighting SMARTLUX*

1968



PVD



611 A GLASS

Decorative tempered glass NIGHT SKY GLOSS outside / PVD COPPER DUSK / Special handle LUXOR SPECTRA with SMARTLUX illumination / SECUROSMART finger scanner with ARMO COMFORT ELECTRO lock / Protective trim 1500 / Ambient floor lighting SMARTLUX



613 A GLASS

Decorative tempered glass with glazing edges NIGHT SKY GLOSS / Special handle LUXOR SPECTRA with SMARTLUX illumination / SECUROSMART finger scanner with ARMO COMFORT ELECTRO lock / Protective trim 1500 / Ambient floor lighting SMARTLUX



613 A ALU

Colour FS 9016 / PVD COPPER DUSK / Special handle LUXOR with SMARTLUX illumination / SECUROSMART finger scanner and ARMO COMFORT ELECTRO lock / Protective trim 6435 / Ambient floor lighting SMARTLUX



607 A ALU

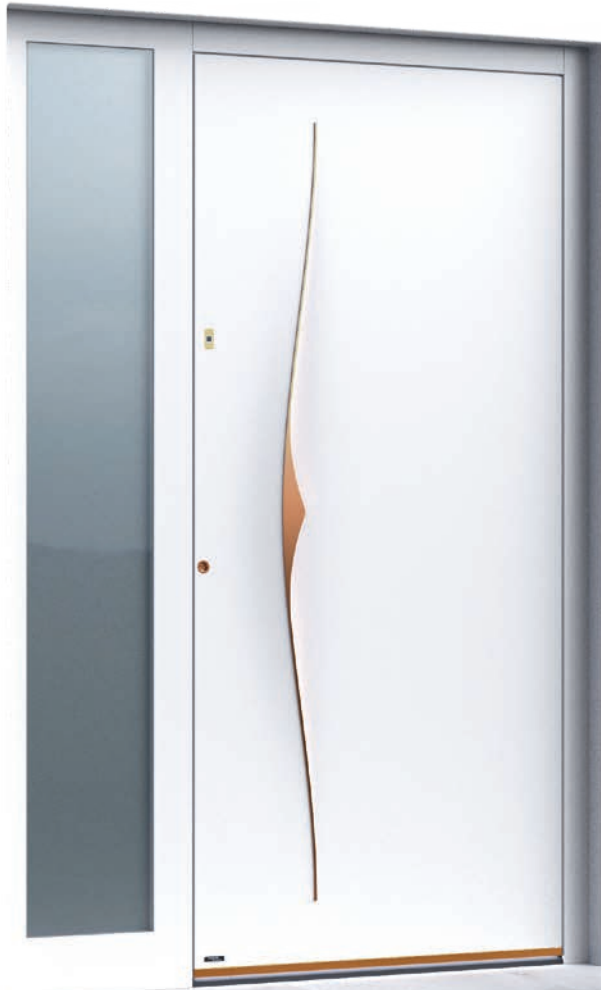
Colour FS 9016 / PVD VOLCANIC SHADOW / Application in the decorative tempered glass NIGHT STORM GLOSS / Special handle LUXOR SPECTRA with SMARTLUX illumination / SECUROSMAST finger scanner with ARMO COMFORT ELECTRO lock / Protective trim 1500 / Ambient floor lighting SMARTLUX



608 A GLASS

Decorative tempered glass with grooves NIGHT STORM in elegant combination MATTE-GLOSS / PVD MYSTIC BRONZE / Special handle LUXOR SPECTRA with SMARTLUX illumination / SECUROSMAST finger scanner with ARMO COMFORT ELECTRO lock / Protective trim 1500 / Ambient floor lighting SMARTLUX





628 A ALU

Colour FS 9016 / PVD COPPER DUSK / Handle GRIP 9619 with SMARTLUX Illumination / SECUROSMART finger scanner with ARMO COMFORT ELECTRO lock / Protective trim 6435 / Ambient floor lighting SMARTLUX



628 ALU

Colour DB 703 (80077) / Glass motif sandblasted / Handle GRIP 9619 with SMARTLUX illumination / SECUROSMART finger scanner with ARMO COMFORT ELECTRO lock / Protective trim 6435 / Ambient floor lighting SMARTLUX





The background of the slide is a photograph of lush green foliage, possibly a tree or large shrub, with a clear blue sky visible in the upper left corner. The leaves are vibrant green and have a glossy texture. A white horizontal bar is superimposed over the middle of the image, containing the title text.

ULTIMUM **MULTILEVEL** MODELS

SMART
LUX

PVD

Garibaldi

ULTIMUM

40

PIRNAR



515 A ALU

Colour FS 9016 / Additional colour BLACK OAK / Personalized handle 9209 with illumination LABELUX / SECUROSMART finger scanner with ARMO COMFORT ELECTRO lock / Protective trim 6434 / Ambient floor lighting SMARTLUX



515 A DUNE

Colour FS 9005 / PVD VOLCANIC SHADOW / 3D DUNE / Handle 9509 with SMARTLUX illumination / SECUROSMART finger scanner with ARMO COMFORT ELECTRO lock / Ambient floor lighting SMARTLUX



515 GLASS

Colour DB 703 / PVD COPPER DUSK / Decorative tempered glass NIGHT SKY GLOSS / Handle 9509 with SMARTLUX illumination / SECUROSMART finger scanner with ARMO COMFORT ELECTRO lock / Ambient floor lighting SMARTLUX



515 DUNE

Colour DB 703 / PVD COPPER DUSK / 3D DUNE / Glass motif sandblasted / Handle 9509 NERO with SMARTLUX illumination / SECUROSMART finger scanner with ARMO COMFORT ELECTRO lock / Ambient floor lighting SMARTLUX



515 GLASS

Colour FS 9005 / Second colour FS QUARZ 2 / PVD VOLCANIC SHADOW / Decorative tempered glass DARK GREY with black motif outside / Glass motif sandblasted / Handle 9509 with SMARTLUX illumination / SECUROSMART finger scanner with ARMO COMFORT ELECTRO lock / Ambient floor lighting SMARTLUX



523 A ALU

Colour FS 9016 / PVD VOLCANIC SHADOW / Decorative tempered glass NIGHT SKY GLOSS outside / Handle ALTUM 9001 / SECUROSMART finger scanner with ARMO COMFORT ELECTRO lock / Frontal ambient lighting SMARTLUX 6951 / Ambient floor lighting SMARTLUX



523 DUNE

Colour FS 7016 / 3D DUNE / Decorative tempered glass DARK GREY with black motif / Handle ANGULAR ALTUM 9001 / Scratch protection PRIVILEGELUX prepared for finger scanner / SECUROSMART finger scanner with ARMO COMFORT ELECTRO lock / Frontal ambient lighting SMARTLUX 6951 / Ambient floor lighting SMARTLUX



507 ALU

Colour FS 7016 / Additional colour NATURAL OAK / PVD VOLCANIC SHADOW / Glass motif sandblasted / Handle 9104 glossy / Scratch protection PRIVILEGELUX prepared for finger scanner / SECUROSMART finger scanner and ARMO COMFORT ELECTRO lock / Ambient floor lighting SMARTLUX



507 GLASS

Colour DB 703 (80077) / PVD MYSTIC BRONZE / Decorative tempered glass NIGHT SKY GLOSS / Glass motif sandblasted / Handle 9104 glossy / Scratch protection PRIVILEGELUX prepared for finger scanner / SECUROSMART finger scanner with ARMO COMFORT ELECTRO lock / Ambient floor lighting SMARTLUX



507 DUNE

*Colour FS 7016 / Additional colour 90147 / PVD VOLCANIC SHADOW / 3D DUNE /
Glass motif sandblasted / Handle 9104 glossy / SECUROSMART finger scanner
with ARMO COMFORT ELECTRO lock / Ambient floor lighting SMARTLUX*



**THE DUNES IN 3D ARE CAREFULLY CRAFTED BY
PIRNAR'S MASTER ARTISANS.**



509 ALU

Colour 70105 / Additional colour FS QUARZ 1 / PVD COPPER DUSK / Glass motif sandblasted / Handle 9105 / Scratch protection PRIVILEGELUX prepared for finger scanner / SECUROSMART finger scanner and ARMO COMFORT ELECTRO lock / Ambient floor lighting SMARTLUX



510 GLASS

Colour 70161 / PVD Mystic / Decorative tempered glass NIGHT SKY GLOSS / Glass motif sandblasted / Handle 9501 / SECUROSMART finger scanner with ARMO COMFORT ELECTRO lock / Ambient floor lighting SMARTLUX



510 ALU

Colour 70105 / Additional colour outside 70161 / PVD VOLCANIC SHADOW / Glass motif sandblasted / Handle 9501 / SECUROSART finger scanner with ARMO COMFORT ELECTRO lock / Ambient floor lighting SMARTLUX



PVD

ULTIMUM
48
PIRVAR





505 GLASS

Colour DB 703 (80077) / PVD VOLCANIC SHADOW / Decorative tempered glass with black motif outside / Glass motif sandblasted / Handle 9502 / SECUROSMART finger scanner with ARMO COMFORT ELECTRO lock / Ambient floor lighting SMARTLUX



505 ALU

Colour FS 9016 / Additional colour outside DB 703 / PVD MYSTIC BRONZE / Glass motif sandblasted / Handle 9502 / SECUROSMART finger scanner with ARMO COMFORT ELECTRO lock / Ambient floor lighting SMARTLUX

**524 A ALU**

*Colour FS 7016 / Additional colour décor
VINTAGE OLD DARK WOOD / Handle ROUND ALTUM /
Scratch protection PRIVILEGELUX prepared for finger
scanner / SECUROSMART finger scanner with ARMO
COMFORT ELECTRO lock / Frontal ambient lighting
SMARTLUX 6951 / Ambient floor lighting SMARTLUX*

SMART
LUX

PVD



**527 A DUNE**

Colour FS 7016 / 3D DUNE / PVD COPPER DUSK /
Split handle 150 and CUSTOM59 / Scratch protection
PRIVILEGELUX prepared for finger scanner /
SECUROSMART finger scanner with ARMO COMFORT
ELECTRO lock / Frontal ambient lighting SMARTLUX
6951 / Ambient floor lighting SMARTLUX



handbuilt by
PIRNAR

for the
Lewis
family

SMART
LUX

PVD



ULTIMUM

54

PIRNAR



GERMAN
DESIGN
AWARD
SPECIAL
2019



506 GLASS

Colour FS 9005 / Additional colour 90147 / PVD VOLCANIC SHADOW / Decorative tempered glass with black motif outside Glass motif sandblasted / Handle ROUND150 with illumination MAGMALUX / SECUROSMART finger scanner with ARMO COMFORT ELECTRO lock / Protective trim 6434 / Ambient floor lighting SMARTLUX



517 ALU

Colour FS 7016 / Additional colour decor BLACK OAK / Glass motif sandblasted / Handle ANGULAR150 with illumination CRYSTALUX / SECUROSMART finger scanner with ARMO COMFORT ELECTRO lock / Protective trim 6434 / Ambient floor lighting SMARTLUX



SMART
LUX

PVD



GERMAN
DESIGN
AWARD
SPECIAL
2019





529 ALU

Colour FS QUARZ 2 / PVD
 VOLCANIC SHADOW / Decorative tempered
 glass DARK GREY with black motif outside /
 Satinato / Handle 9626 with illumination
 CRYSTALUX / SECUROSART finger scanner
 with ARMO COMFORT ELECTRO lock /
 Frontal ambient lighting SMARTLUX 6951 /
 Ambient floor lighting SMARTLUX



**530 GLASS**

Double-leaf door / Colour FS 9005 / PVD

COPPER DUSK / Decorative tempered glass with black motif outside / Glass completely sandblasted / Handle NAUTILUS 9628 / SECUROSMART finger scanner with ARMO COMFORT ELECTRO lock / Ambient floor lighting SMARTLUX



PURE



607 A ALU → 34 608 A GLASS → 34 611 A GLASS → 32 612 A GLASS → 30 613 A GLASS → 33



613 A ALU → 33 624 A ALU → 28 624 ALU → 28 624 GLASS → 29 626 A ALU → 27



626 ALU → 26 628 A ALU → 36 628 ALU → 36 635 ALU → 25 635 GLASS → 24

MULTILEVEL



505 ALU → 49 505 GLASS → 49 506 GLASS → 54 507 ALU → 44 507 DUNE → 45 507 GLASS → 44 509 ALU → 46



510 ALU → 47 510 GLASS → 46 515 A ALU → 40 515 A DUNE → 41 515 GLASS → 41 515 DUNE → 42 515 GLASS → 42



517 ALU → 55 523 A ALU → 43 523 DUNE → 43 524 A ALU → 50 527 A DUNE → 52 529 ALU → 57 530 GLASS → 58



reddot award 2019

ULTIMUM

60

PIRNAR

WARRANTY

Pirnar aluminium entrance doors come with a 10-year warranty – a clear commitment to quality, durability, and a peace of mind. This extended cover protects your investment and reflects the outstanding performance of every Pirnar entrance door.



10 years:

- Door functionality
- The durability of the powder-coated aluminium surface of the doors, including resistance to cracking, peeling, and excessive fading of the coating under normal environmental conditions

5 years:

- For the airtightness of thermal insulating glass
- The visual consistency of the glass with the EN 1279:2018 standard

2 years:

- For issues pertaining to the performance of the door's built-in hardware (lock, cylinder, handle, self-closing mechanism, handles)
- For the performance of electronic components

The full warranty terms and conditions can be found at www.pirnar.co.uk.

Pirnar models are protected by copyright. We reserve the right to change prices, technical specifications, and equipment without prior notice. Due to technical printing reasons, variations in color or glass may occur. Please verify colors according to the applicable RAL color chart. The painted surfaces of Pirnar doors are colorfast due to special treatment.

Edition 01/2025



PIRNAR

Pirnar d.o.o.
Bravničarjeva ulica 20
SI-1000 Ljubljana, Slovenia
T +386 1 563 39 02
E sales@pirnar.si
www.pirnar.co.uk